

FRIENDS OF THE FLITCH GREEN ACADEMY

# ≡ NEWSLETTER ≡

APRIL 2021



Hello and welcome to the FFG newsletter. I am privileged to have become Chair of the FFG for a second time and very excited to be working with our new Principle Miss Willis. Such a lot has happened since September and I am thrilled that even with all the Covid restrictions, we have been able to arrange some amazing fundraisers and be able to provide funds to the Academy for the benefit of all of our children. The FFG are working very closely with the Academy on some big development projects and events. The whole team appreciate all of your continued support and look forward to seeing you more later this year.



SARAH TUCK, CHAIR

## MEET

→ THE TEAM

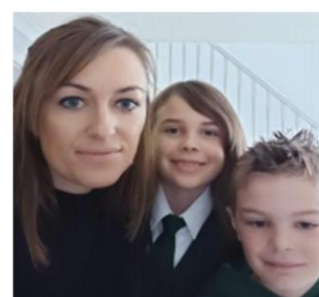
Last year, we said goodbye to the outgoing committee members and thanked them for their hard work and dedication keeping the FFG going through a difficult time. Here is a reminder of the new committee roles, as elected in at the AGM at the beginning of this academic year.



**Sarah Tuck**  
Chairperson



**Jenny Collom**  
Secretary



**Emma Miles**  
Treasurer

Other active members of our FFG include Sarah Rider, Victoria Chandler, Marina Tazieva, Mona Vaeremans, Victoria Brown, Jess Kearns, Joanna Colley and Helen Alabede. As a parent, grandparent or carer of a child in our school you automatically become a member of the FFG. You are welcome to join any of our meetings and we hope that you will support us by attending and volunteering to help at our events – our next meeting is Thursday 13 May at 8pm, please get in touch if you'd like to join us [ffg@flitchgreen.net](mailto:ffg@flitchgreen.net).



**NEW**   
 —————> LOGO

Last year, we invited pupils from the Academy to enter a competition to design a new logo for the FFG and we are very proud to reveal our winning design! Congratulations and a big thank you to Suzie from Sun class for creating this brilliant logo for us.

click here   
 (or search 'Friends of The  
 Flitch Green Academy')



**FOLLOW US ON FACEBOOK TO KEEP  
 UP TO DATE WITH NEWS AND EVENTS**

# FUNDRAISING & PURCHASES

The FFG are delighted to share with you the total amounts raised from each of our events and fundraisers this year so far.



£848 – Halloween Trail

£262 – Halloween Dress up Day

£326 – Christmas Cards

£627 – Christmas Raffle

£2,000 – Flitchmas Trail

£229 – Christmas Dress up Day

£700 – Smartie Challenge

£150 – Lotto





£250 – Mother's Day Tea

£60 – Bags 2 School

£60 – Easter Bounce



↖ Rosie taking part in our Easter Bunny Hop!



## PURCHASES

We are pleased to share with you our recent purchases for the Academy which include postcards sent home to the children during home schooling, a camera for online PE lessons, Christmas Goody Bags for Reception children, Christmas (Virtual) Panto and ice cream, 50% of the 2 Johns Workshop, Easter Eggs and virtual activities for each class (in the absence of school trips this year). This is a total of approx. £2,648 donated to the Academy this year so far this year!

## GALLERY



Congratulations to Jupiter class for winning this year's Smarties Challenge – we hope you enjoyed your prize choice of new crafts!

FRIDAY 28<sup>TH</sup> MAY 2021  
**BREAK THE  
RULES DAY**  
MORE INFO COMING SOON

# EVENTS

→ AND FUNDRAISERS

We appreciate that not everyone has the time to attend meetings or become a member of the committee however you can still support our PTA by coming to events and joining in fundraisers to help raise money for our school.

## Clothes Collection

The FFG regularly organise a clothes & shoe collection to help raise funds for the Academy. By getting involved in our collection, you have an opportunity to sort through your cupboards and wardrobes and donate unwanted textiles – this can include adults' and children's clothes, shoes (tied together please), hats, belts, handbags and soft toys. Don't forget to ask grandparents, friends and neighbours to have a sort out as well! **Our next collection date is the 10th May so please start saving up your unwanted bits!**

SAVE THE DATE – 16/07/21

## FLITCH FEST

(pending government guidelines)



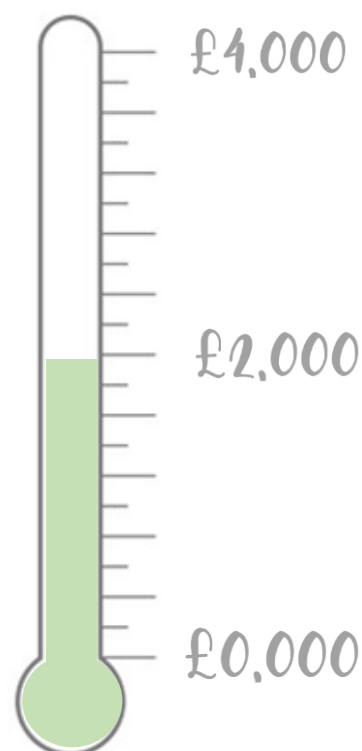
END OF YEAR PARTY!

# PROJECT

→ LIBRARY REVAMP

The FFG are working with the school on their new and exciting plans to revamp the old library area, which will include new shelving and books for all of the children to enjoy. The FFG have already agreed to contribute £2,000 to help get the project started and aim to contribute a further £2,000 through additional fundraising. Please help us reach our target by supporting our up and coming events and fundraisers!

The FFG will also be working with the school to help fund another exciting upcoming project to introduce Forest School to all year groups, this will include providing waterproofs for each child and replenishing them each year, as well as staff training and equipment storage.







REMEMBER THESE?  
SCHOOL TEA TOWELS COMING SOON

secondhand  
uniform sale

DATE TO BE  
CONFIRMED



JOIN OUR LOTTO THIS MONTH AND

≡ WIN £200 ≡

Join our FFG Lotto before the 31<sup>st</sup> May and be entered into our June Bonus Draw to win £200!

The Friends of Flitch Green Lottery is one of the simplest ways to support the children at The Flitch Green Academy. This is a monthly draw and for each £1 lottery number purchased, 40% goes to the monthly winner, 10% to the superdraw in August and 40% to the FFG. The more people who join the bigger the monthly winnings! Each lottery number entry is £1 per month and if you were to buy say three lottery numbers that would only be £3 per month (the price of a coffee) or £36 per year ....So please do support us by joining the FFG lottery club and purchase as many numbers per month you would like. All support is very much appreciated.

CLICK HERE TO JOIN

(or email us at [ffg@flitchgreen.net](mailto:ffg@flitchgreen.net) and we'll send you the link to join!)

CONTACT US



Please feel free to contact us with any questions, ideas or feedback that you have. Perhaps you've got a suggestion you'd like to add to our purchases wish list, or a fundraising event that we could host? Get in touch and let us know - we'd love to hear from you!

E: [ffg@flitchgreen.net](mailto:ffg@flitchgreen.net)